

# The Montana

## Overview

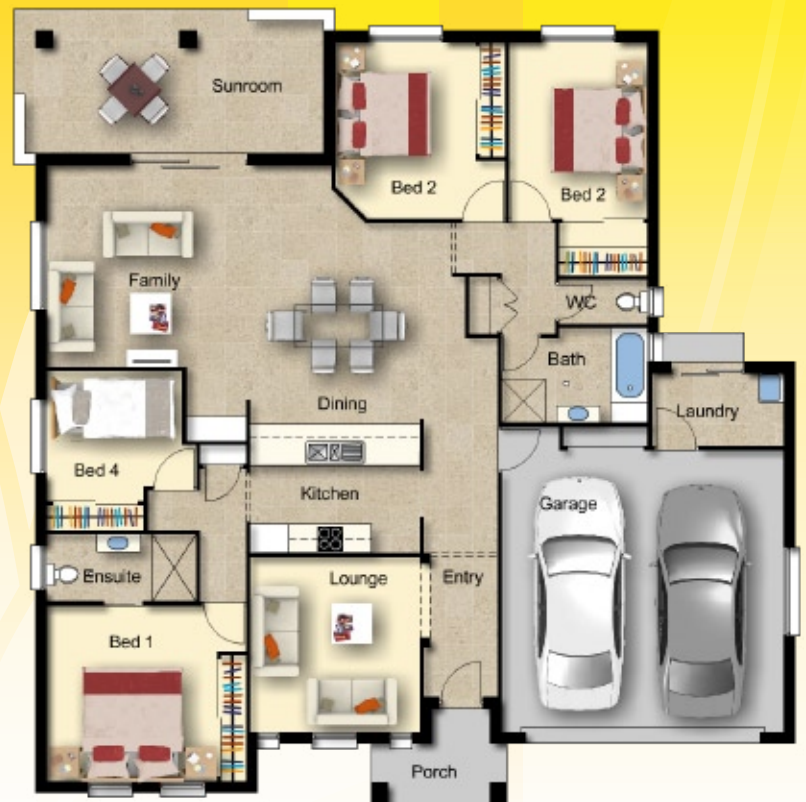


The Montana has a grand entrance and a contemporary open-plan design. This home provides casual, formal & outdoor living areas that are practical & perfect for growing families.

The living areas flow & interact with the galley style kitchen.

### Features

4 bedrooms, main with ensuite & walk in robe. All other bedrooms with full length robes & ceiling fans. Casual & formal living areas. Computer nook. Separate meals/dinning area. Formal entrance with portico. Tiled sun room/alfresco outdoor living area with ceiling fan. Double garage with remote control door & direct access into the home.



# The Montana

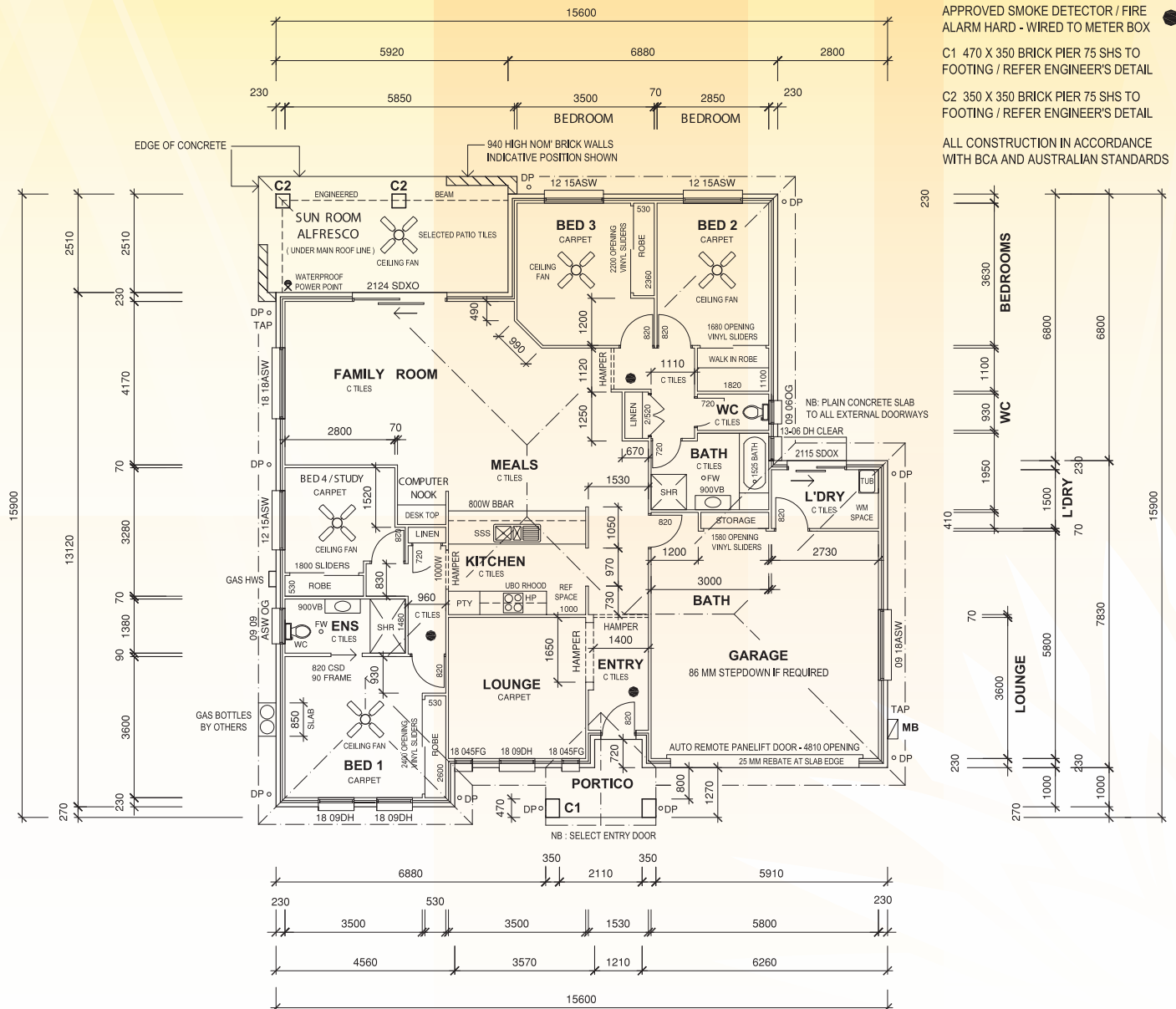
## Detailed Floor Plan

Total Area : 221.29m<sup>2</sup>

Living : 198.00m<sup>2</sup>

Sun Room / Alfresco : 18.85m<sup>2</sup>

Porch : 4.44m<sup>2</sup>



Watermark Homes policy is one of continuous improvement to our quality homes. We reserve the right to alter designs, colours and specifications without notice. Whilst every care has been taken in preparation of this document, the particulars contained herein are not to be construed as any representation of fact. All information provided to us is from reputable sources and no responsibility is accepted by the vendor, its servants or agents for any errors or omissions. All interested parties should make their own enquiries to satisfy themselves in relation to all matters.