

The Kansas

Overview



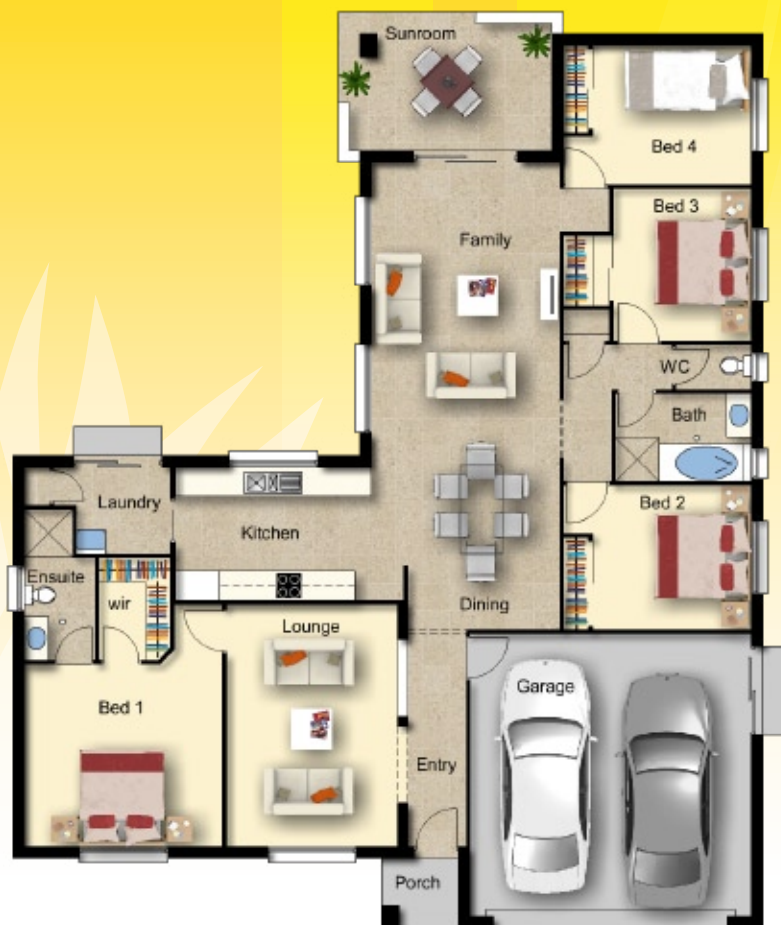
Designed with a grand entrance & open plan contemporary design, the Kansas provides both formal & informal living areas. This home is functional but has large luxurious living areas that are perfect for growing families.

All living areas interact with the modern gallery kitchen. The alfresco living area complements the large informal areas making this home perfect for entertaining all year round.

The main bedroom is located away from the other rooms creating a feeling of seclusion. The double garage is connected to the home providing private access.

Features

4 bedrooms, main with ensuite & walk in robes. All bedrooms are double size with robes & ceiling fans. Formal & informal living areas. Built-in cupboards throughout. Double garage with remote control door - security access into the home.



The Kansas

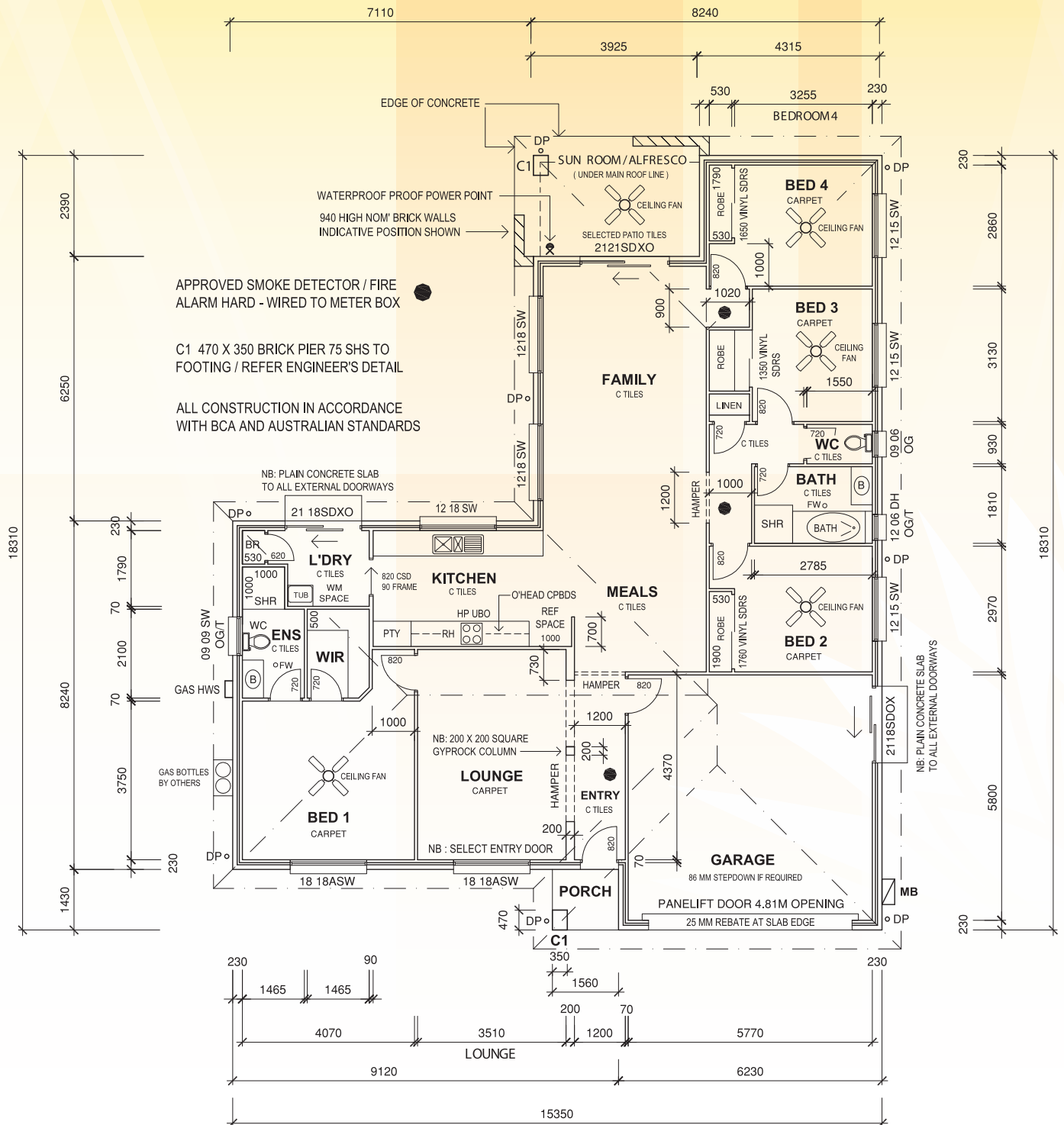
Detailed Floor Plan

Total Area : 213.26m²

Living : 197.07m²

Sun Room / Alfresco : 12.42m²

Porch : 3.77m²



Watermark Homes policy is one of continuous improvement to our quality homes. We reserve the right to alter designs, colours and specifications without notice. Whilst every care has been taken in preparation of this document, the particulars contained herein are not to be construed as any representation of fact. All information provided to us is from reputable sources and no responsibility is accepted by the vendor, its servants or agents for any errors or omissions. All interested parties should make their own enquiries to satisfy themselves in relation to all matters.